

## Test stand

---

### MH-1000N / ML-1000N series

## Motorized Test Stand



(Photo is MH-1000N. Force gauge shown above is sold separately.)

#### [Applications]

- Various material testing up to 1000N  
(measuring of tensile strength, compressive strength, shearing strength and etc).
- Analysis of mechanical parts for break point and free fit.
- Measure peeling force of glued material or heat seals.

#### [Feature]

- Stable measuring by feed screw features with small step of the travel length.
- Easier handling for material due to its horizontal design.
- Motion in stable speed.
- Devised top cover avoids fragments of a sample.
- Optional scale unit or length/speed meter implements scaling its travel length.
- Overload protection and force control connecting with digital force gauge (Only for MH series)
- Compatible with IMADA digital and mechanical force gauges (except high capacity models).

**[MH-1000N/ML-1000N series models]**

Model	Capacity	Auto cycle	Length/speed meter	Scale unit
MH-1000N	1000N	Yes		
ML-1000N				
MH-1000N-E		Yes	Yes	
ML-1000N-E			Yes	
MH-1000N-S		Yes		Yes
ML-1000N-S				Yes

**[MH-1000N/ML-1000N series specifications]**

Model	MH-1000N	ML-1000N
Capacity	1000N	
Stroke	Approx. 300mm	
Feeding method	Feed screw with 3 mm lead	
Travel speed	6 to 180 mm/min non-step	
Force gauge	Imada mechanical / digital force gauge <i>High capacity ZPH/Z2H/PSH series are <u>not</u> compatible.</i>	
Single/Continuous cycle	Yes	Press and keep button for 2 seconds so that this machine keeps moving
Overload protection Force control	Yes *0	
Power	Free between 100 to 240 VAC	
Dimensions	See dimensions	
Wight	Approx. 14kg	

\*0 Optional cable CB-501 is necessary for connection with force gauge. Some model of force gauge is not compatible with this function.

**[Built-in options]**

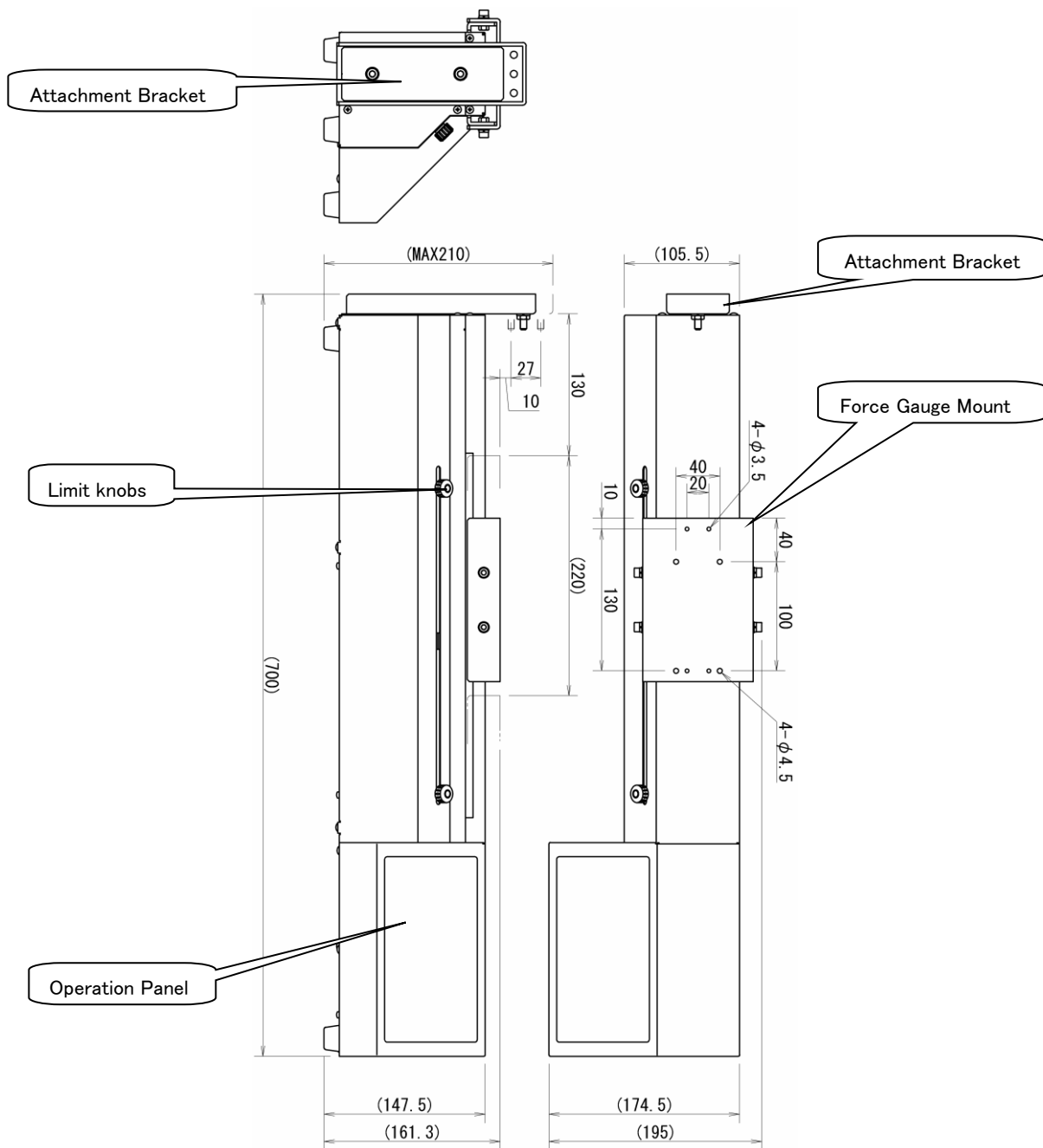
Factory built only. The customer can not build them after purchasing.

<b>Scale unit (option *1)</b>	Resolution: 0.01mm Zero / Origin
<b>Length/speed meter (option *2)</b>	Display unit EN-00 Speed resolution 1mm/min Length resolution 0.01mm Zero
<b>Speed range</b>	10 to 300 mm/min Capacity 500N “-F” suffix follows after the model number
<b>Extended stroke</b>	Up to 1000 mm Ask us for detail

\*1 Factory built only for MH/ML-1000N-S

\*2 Factory built only for MH/ML-1000N-E. See a brochure for EN-00

[Dimensions]



[Note]

- Force gauge is not included with this test stand.
- Various optional attachments are available.
- "Overload protection" does NOT completely avoid every failure of the gauge.
- Please do not apply the load exceeding force of capacity.
- Please avoid rapid temperature change, high humidity, the water, the dust, and the strong shock.
- It may change without a preliminary announcement for improvement etc.

## MH-300

# Motorized Horizontal Test Stand



(Force gauge is not included.)

### [Applications]

- Various material testing up to 5000N (measuring of tensile strength, compressive strength, shearing strength and etc).
- Analysis of thick wire harness test.

### [Feature]

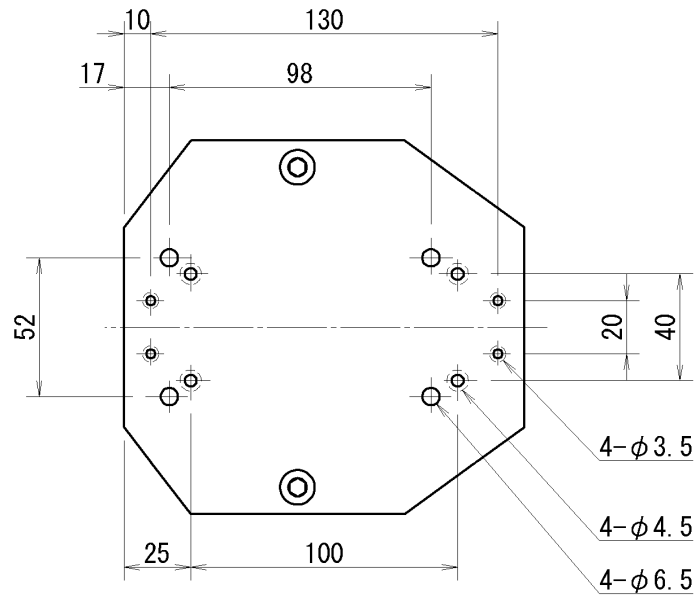
- Stable measuring with constant speed (adjustable) is possible.
- Continuous testing is possible by the auto-cycle function with adjustable upper and lower limits.
- Operation efficiency is excellent due to its spacious design.

## [MH-300 Specifications]

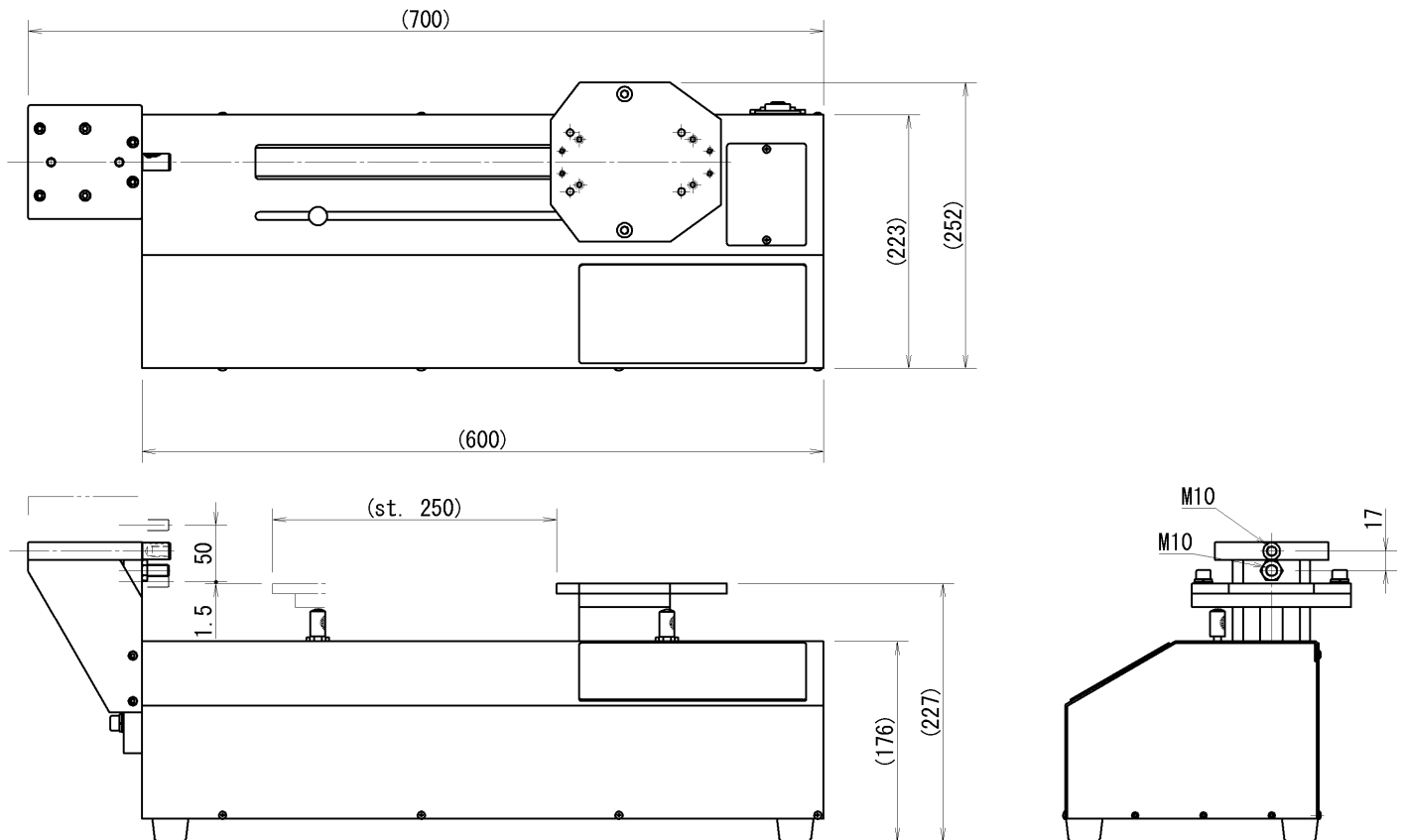
<b>Model</b>	<b>MH-300</b>
<b>Capacity</b>	<b>3000N</b>
<b>Stroke</b>	<b>250mm</b>
<b>Travel speed</b>	<b>8~240mm/min non-step adjustable</b>
<b>Operation mode</b>	<b>3 mode selectable (manual, one cycle, continuous cycle)</b>
<b>Safety device</b>	<b>Adjustable right/left limit switch , Emergency stop button</b>
<b>Force gauge mounting plate</b>	<b>Refer to the following drawings for gauge mounting hole pitch</b>
<b>Dimension (mm)</b>	<b>Refer to the following drawings</b>
<b>Weight</b>	<b>28.5 kg</b>
<b>Power supply</b>	<b>AC100V~AC240V free input</b>
<b>Options (Built only in factory)</b>	<b>Slow start (-P)</b> <b>5 speed changeover switch (-5C)</b> <b>Encoder (-E)</b> <b>Extended stroke (-L650)</b> * Use suffix after model name to select options.
<b>Accessory</b>	<b>Power supply cable</b> <b>Gauge mounting bolts</b>

[Dimension]

Force gauge mounting table



Body of machine



[Note]

Force gauge (sold separately) is required for actual measuring.

Various optional attachments are available for different types of measurement.

All information is subject to change without prior notice.