

Torque Load Cell for eZ-Connect series eHT series

This load cell can measure torque (Rotating force/ Twisting force).
This is designed exclusively for eZ-Connect series.
Combine an optional attachment to complete the testing system.

eHT series

Capacity: 0.5N-m/2N-m/5N-m/10N-m

Combine this load cell with eZ-Connect series amplifier(separately sold)(*)



*You need an amplifier and an attachment additionally to perform measurement and indicate torque values.
Please refer Page 2 and 3 for the detail.

Easy set up

◎You can easily mount an attachment.



Prepare an attachment.



Insert the attachment.



Turn the screw
by an accessory L wrench.

We offer a wide range of attachments(*1), so you can replace attachments to meet your measurement needs.
We also offer custom made attachment to meet your particular needs.

*This load cell does NOT come with any attachments.

*1 Please see page 3 for further information.

[eZ-Connect series Load Cell specification]

Model	eHT-0.5N~10N
Feature	Torque Load Cell (Exclusively for eZ-Connect series)
Accuracy	±0.5% F.S.
Safe overload rating	200%
Cable	Approx. 350mm (Curl Cord, when contracted)
Weight	Approx. 430g
Dimension	Please refer to the dimension.

[eZ-Connect series]

You can change load cells according to your purposes.


- Load cell

Load cell model	Capacity	Accuracy(*1)	Display	Resolution
eHT-0.5N	50N-cm	±0.7% F.S.or less	50.00N-cm(*2)	0.01N-cm
eHT-2N	2N-m		2.000N-m(200.0N-cm)	0.001N-m(0.1N-cm)
eHT-5N	5N-m		5.000N-m(500.0N-cm)	0.001N-m(0.1N-cm)
eHT-10N	10N-m		10.00N-m(1000N-cm)	0.01N

*1 Accuracy here is calculated after the sensor is combined with an indicator below.

*2 Display unit is "N-cm" only. You can switch N-m(N-cm) to kgf(kgf-cm) or lbf-in(ozf-in).

- Indicator eZT *Please combine a load cell exclusive for eZ-Connect.

Image	Feature	Accuracy
	<ul style="list-style-type: none"> No adjustment is needed when you change load cells. You can measure different force range. You can measure different types of force. You can reduce risks in operation 	<p>*Accuracy here is the total of load cell's accuracy (refer to each specifications) and indicator's one (+/-0.2%F.S.).</p> <p>We offer higher accuracy models; ZT series (sensor separate type) and FA plus. For detail, please refer to page 3.</p>

* Please refer to the specification of each product for the detail.

***We offer all-in-one (an indicator and the load cell combined) model, HTGS/HTGA series.**

If you do not need to change load cells basically, we recommend this series since it costs lower and has higher accuracy.

*Please refer to the specifications of HTGA/HTGS series for further information.

[Related Products]

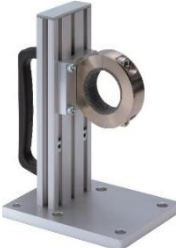


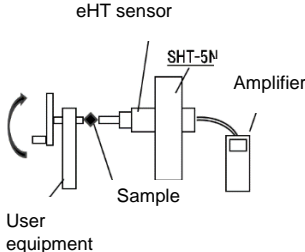
- Optional Attachment

eHT can be combined with various attachments to handle a wide range of torque testing applications.					
Model	Pin chuck HT-DC-13 series	Socket holder HT-9.5SQ	Torque driver HT-DBH	M10 adaptor HT-AD-M10	Small table St series
Photo					
Feature	Ideal for gripping columnar samples.	Ideal for torque wrench or screw drive bit.	Ideal for measuring tightening/loosening torque.	This adaptor is used to mount M10 attachment.	You can change pins to meet your measurement needs.

*Torque gauges or load cells do NOT come with any attachments.

*Please refer to the specifications of "Attachments for torque gauges" and "Tables for Torque gauges" for further information.

- Optional Test Stand

This test stand can fix the sensor and achieve greater accuracy.		
Model	SHT-5N	
Specification	  <p>You can fix the sensor both horizontally and vertically</p>	<p><u>Sensor Holder</u> Capacity: 5N-m (500N-cm) Weight: Approx. 1100g Dimension: Please refer to Page 6.</p> <p>*You cannot combine eHT-10N with this stand. *You can fix it on your equipment by screws.</p>
Usage		
	<p>This stand achieves greater accuracy since it keeps sensor vertically or horizontally.</p>	<p>[Fix the sensor horizontally] - Winding torque measurement of torsion spring</p>
		<p>[Fix the sensor vertically] - Turning torque test of small screws or turbins - Simple screw cap torque test *Please combine HT-ST(the Small table).</p>

Do you have any requests like mentioned below?

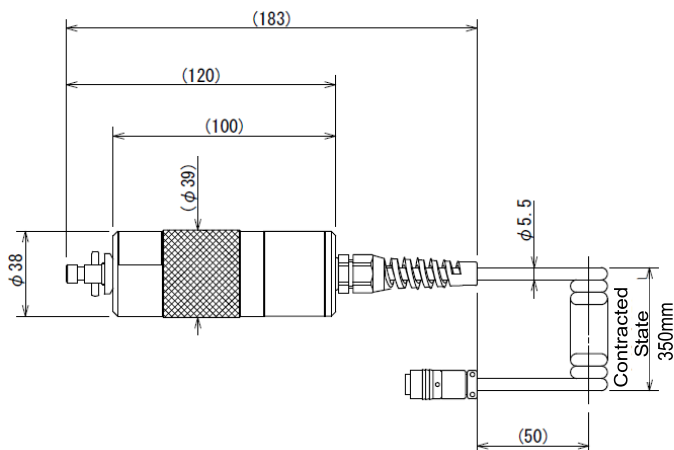
☞ You need flexible cable. ☞ You need to extend the length of cable.

We can custom design and manufacture to meet your particular requirements.

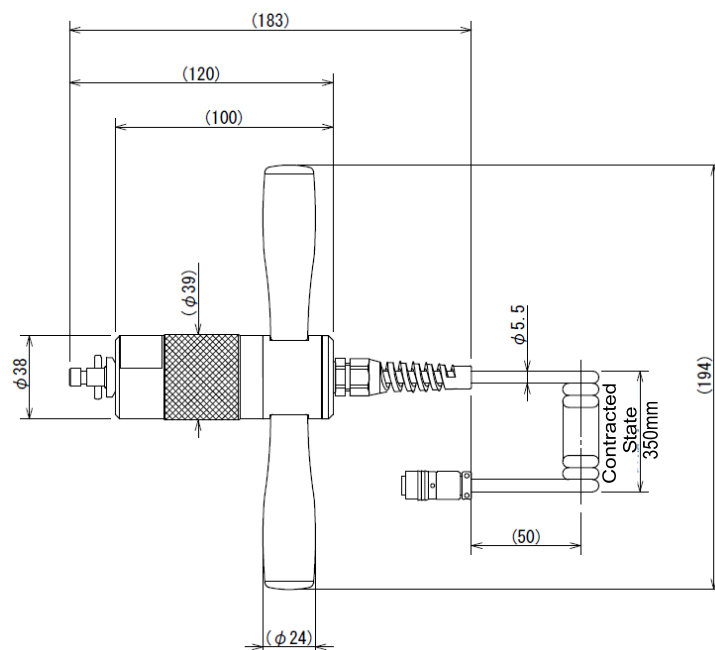
Please contact us for detail. Our service gr: +81-(0)532-33-3288

[Dimension]

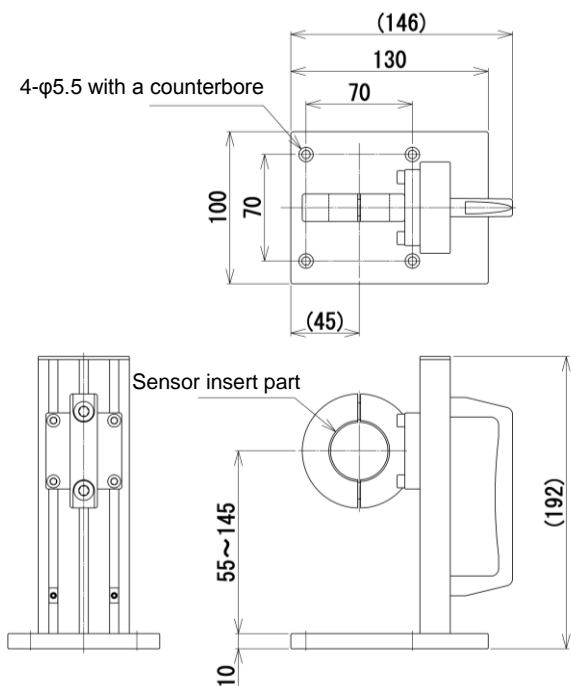
eHT-0.5N/2N/5N



eHT-10N



Sensor Holder SHT-5N



[Cautions]

- This product is designed for force measurement only. Do not use it for other purposes.
- Please pay close attention for installation.
 - Never apply impact load especially on the sensing direction.
 - Do not apply bending or torsion stress to a sensing part.
- Do not use under the environment such as high temperature, high humidity, near water, dusty place, and rapid temperature changes.
- The contents may be changed without notice in advance.
- Please note that a load cell's capacity differs slightly depending on a selected unit of the indicators. Please contact us for detail.

Please feel free to contact us (+81-(0)-532-33-3288) for your measurement.