

Pantograph grips PGC series

PGC series are ideal for tensile tests, gripping various types of samples such as film, rubber, paper, buttons and so on. This fixture is an integral component of testing system, so please use it with IMADA force gauges (and test stands if necessary) to carry out tensile tests.

PGC series




It is for tensile test, gripping different thickness of samples. IMADA offers various designs of PGC grips.



Tensile test example with PGC series



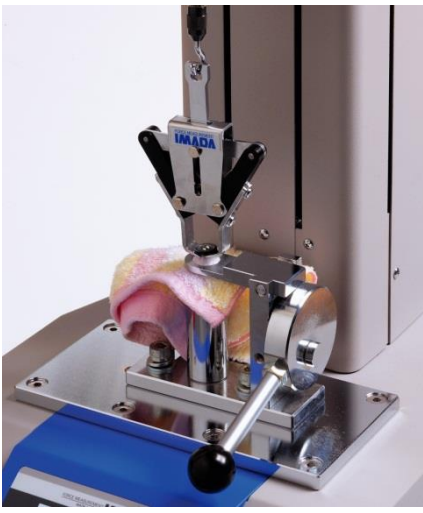


Easy and Handy





Easy and quick set up	Fit to grip flexible samples*	Grip different sizes of samples*
		
<ul style="list-style-type: none"> ● Easy to grip samples like as usability of clothes pins. ● Shorten the time to set up (just hang it on the hook)*¹. 	<ul style="list-style-type: none"> ● The more it is pulled, the more strongly it grips samples ● More appropriate to grip flexible samples firmly such as rubber, resin and so on. 	<ul style="list-style-type: none"> ● Opening width is 15mm at maximum ● Grips different thickness of samples.

*Some samples cannot be gripped by PGC series depending on their materials or shapes.

*¹PGC-2530(High capacity model type) is attached directly to the thread of a force gauge.

Tensile strength test of rubber-made sample with PGC-0510	Tensile strength test of USB cable with PGC-2530	Tensile strength test of sewed buttons with PGC-BC
		

[Specifications]

Model	PGC-0505* ¹ , * ²	PGC-0510* ²	PGC-2530	PGC-BC* ²
Photos				
Features	The slim grip is ideal for a sample at a narrow space.	Lightweight standard model. The grip open widely.	The high capacity model up to 2500N.	Tensile Strength of sewed buttons can be measured combining it with BC-15* ³ (fixture for a button)
Capacity	500N		2500N	300N
Hole for a hook (*2)	φ6		—	φ6
Screws to mount	—	—	M10	—
Opening width	0.8~20mm	Max.15mm		Max.20mm
Weight	Approx. 170g	Approx. 110g	Approx. 750g	Approx. 125g
Dimensions	Please refer to Dimensions in the next page			
Recommended force gauges	PS/FB/DS2/ZT Series			

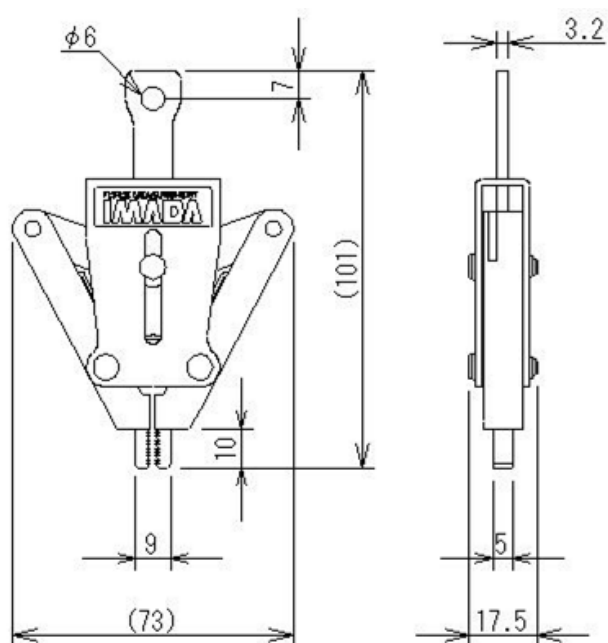
*¹It is unable to grip a sample which thickness is under 0.8 mm. It also not suitable for slippery materials and plating surface.

*²A standard attachment small hook (A-1/S-1/SR-1) is necessary to attach PGC to a force gauge.

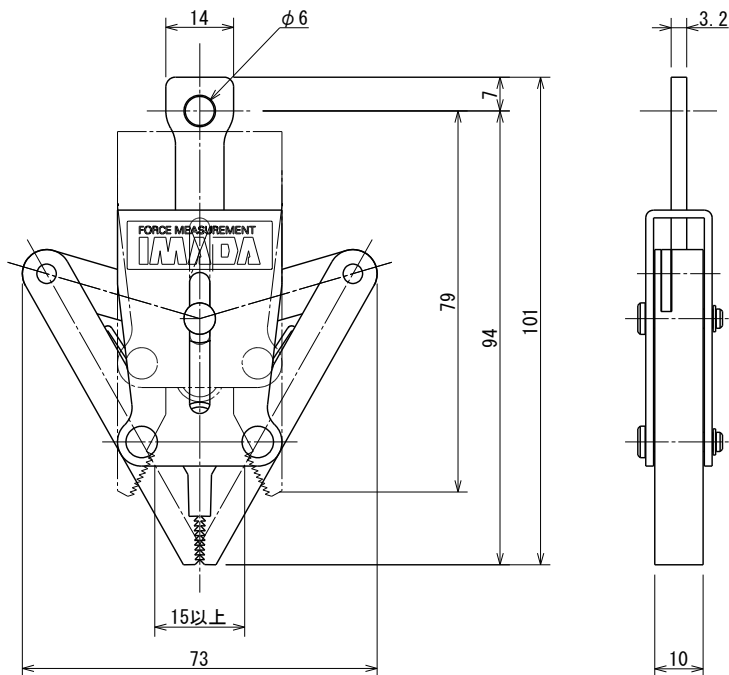
*³Please contact our customer service group (+81-(0)532-33-3288) for the detail of BC-15.

【Dimensions(Unit:mm)】

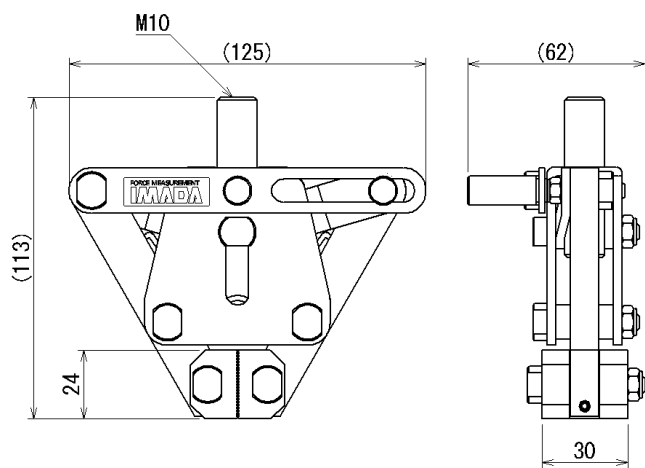
PGC-0505



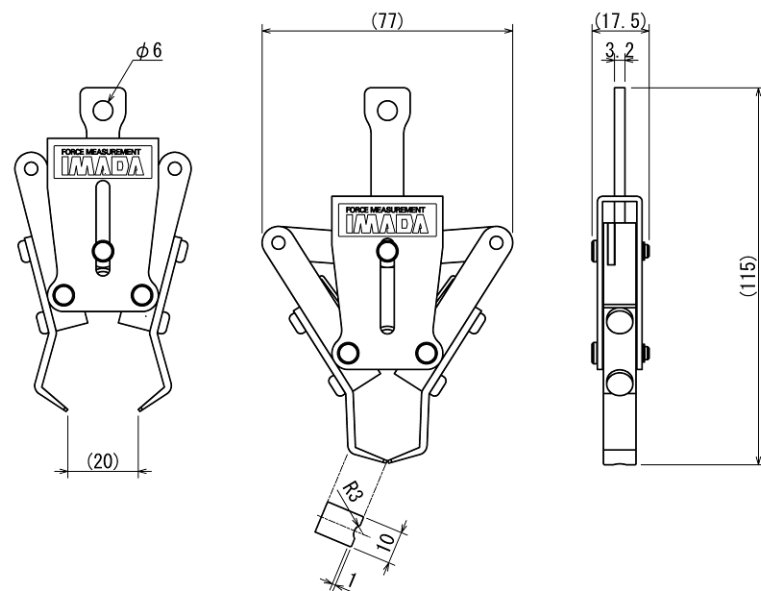
PGC-0510



PGC-2530



PGC-BC

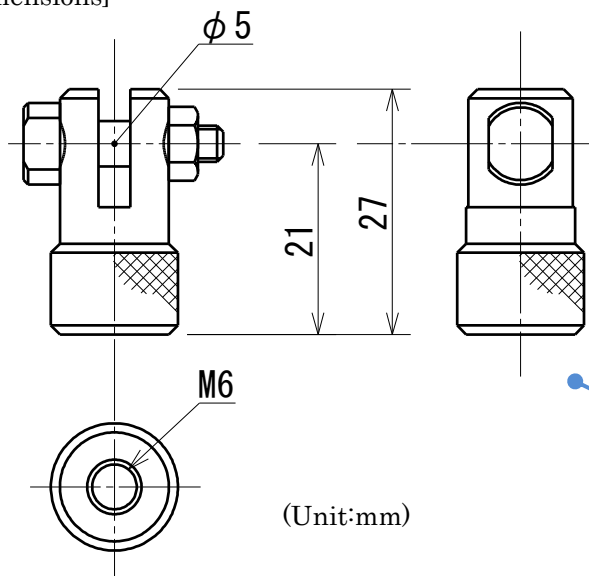


[Optional adaptor]

[Specifications]

Model	PGC-AD6
The purpose of use	An adaptor to mount PGC-0505/PGC-0510 on IMADA test stand. *The adapter is necessary if you use PGC series to attach test stand like a photo below.
Capacity	500N
Mounting screw	M6

[Dimensions]



[Caution]

- The contents may be changed without previous notice.
- All of products are designed for measurement purpose only.
- Force gauges and test stands are sold separately.
- Some sample cannot be measured depending on their materials or shapes.
- Do not copy and use this content without authority.

Please feel free to contact us for measurement solutions, distributor's information in your country, and so on.

TEL: +81-(0)532-33-3288
Email: info@forcegauge.net