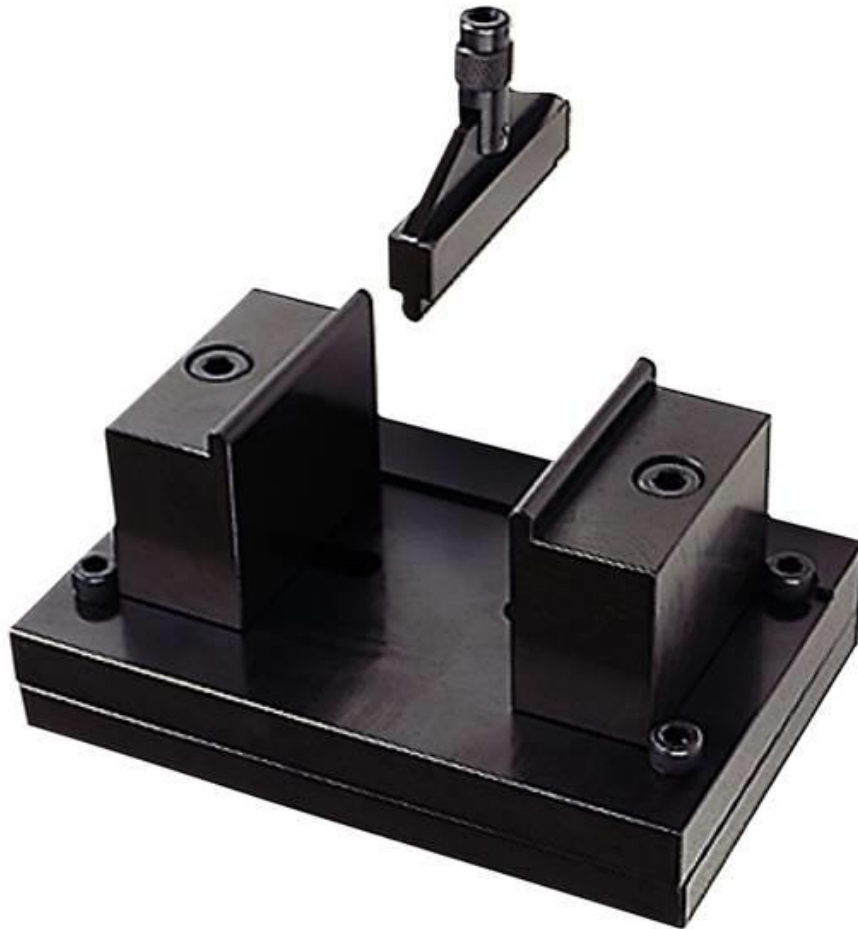

Bend Test Stand / GA-10N, 5000N

For bend, compression test



[Applications]

The bend test stand is installed on the Imada's force gauge for compression test of various test pieces.

[Feature]

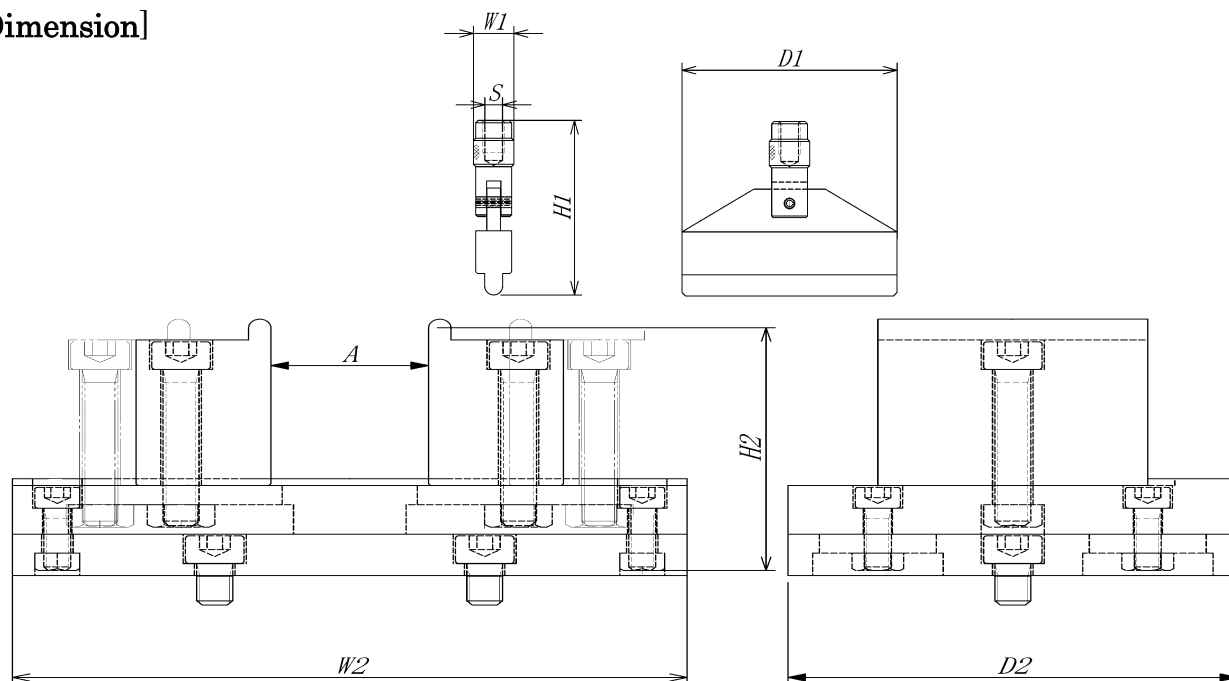
They are suitable for checking for bend, compression test.

It is partly accordance with JIS T 6526:2012 "Dental ceramic materials"(GA-5000N only)

[Specifications]

	<i>GA-10N</i>	<i>GA-5000N</i>
Model	Normal	High Capacity
Capacity	500N	5000N
Mounting Screws[S]	M6P1	M10P1.5
Weight (Upper)	100 g	120 g
Weight (Bottom)	4100 g	4200 g
Dimension (W1×H1×D1) (W2×H2×D2)	11.5×49×60mm 150×74×100mm	16.5×50×60mm 150×69×100mm
Opening width [A]	5~60 mm	5~70mm
With Force Gauge	PS/FB/DS2/ZT series 20N~500N	PSH/DS2/ZT series 20N~2000N

[Dimension]



Size change as custom made order is possible for diameter of the pressing fixture and the supporting part, opening width and others
Please feel free to contact us if the detail is necessary (TEL:+81-(0) 532-33-3288).

[Note]

- Particular materials and shape can not be used.
- Combining with Imada's test stand, more stable measuring becomes possible.
- All information is subject to change without prior notice.